

Resettable counter

It is often more interesting to know how much gas has passed through the meter since a given experiment or test was started, rather than the total volume of gas which has passed through the meter over the course of several tests and experiments. For example, if you are doing environmental measurements at several sites, you would want to know the volume measured at each site.

Shinagawa gas meters with resettable counter offer a simple way to find the measured value. In addition to the normal counter showing the total volume, the meter has a second counter which can be reset to 0 at the press of a button. Reset the counter before you start, and you can read the measured volume directly from the meter.

With this function, you can avoid the difficulties inherent in traditional methods.

1. Manual: Write down the start-value and the end-value, and calculate the difference. This takes more work and increases the risk of human error.
2. Automatic: Use a digital counter or similar to receive pulses from the meter and automatically calculate the volume. This requires additional equipment and a power supply.

The resettable counter is available as an option on all gas meters in the W-NK and WS wet gas meter series, and the DC and DS dry gas meter series. We can also modify existing meters to add this function.

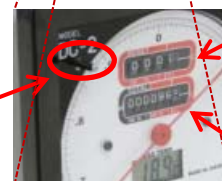
The W-NK meters have a knob on the side for resetting. All other meters use a button on the front of the meter.



Resettable

Totalizing

W-NK-1 with resettable counter



Resettable

Totalizing

DC-2C with resettable counter